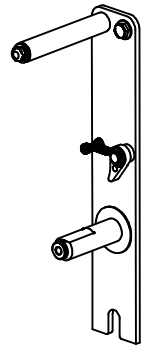


# EXP-76

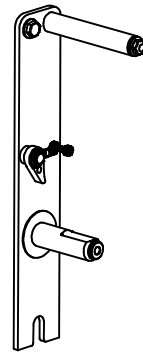
REVISION: A  
ECO NO.: 2309  
DRAWN BY: G. REEDER  
DATE: 6/19/06

# COXREELS SERIES S 17"

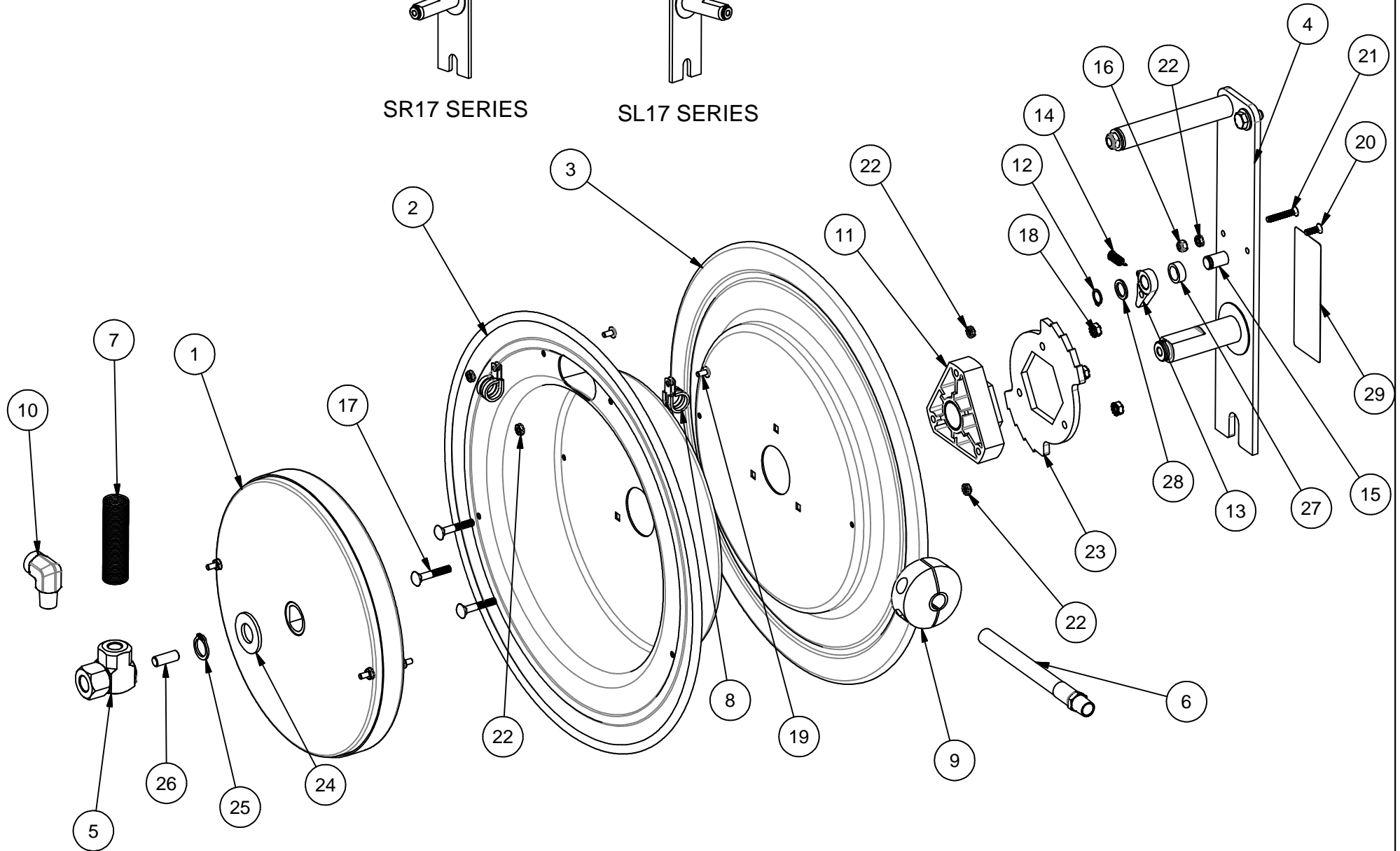
NOTE: APPLY BLUE LOCTITE #242  
TO ITEM 20.



SR17 SERIES



SL17 SERIES



ITEM NO.	PART NO.	DESCRIPTION	QTY.
11	1776-3	ASSY., HUB BEARING	1
12	6326	RING, RETAINING	1
13	640-1-SS	CAM, LOCKING	1
14	274-1-SS	SPRING, DOG	1
15	8423	PIN, LOCKING CAM	1
16	7050	NUT, #10-32 NYLOCK	1
17	1953	CARRIAGE BOLT, 1/4-20 x 1.5	3
18	125	NUT, KEPS, 1/4-20	3
19	245	SCREW, TRUSS HD. 10-32x3/8"	2
20	8427	SCREW, #10-32 X 5/8" FLAT HEAD	1
21	8428	SCREW, #10-32 X 1-1/4" FLAT HEAD	1
22	130	NUT, #10-32 KEPS	5

ITEM NO.	PART NO.	DESCRIPTION	QTY.
23	1924	RING, LOCKING	1
24	1755-1	WASHER, SPACER HDPE	1
25	1753	RING, RETAINING	1
26	10235-SS	STUD, 3/8-16 X 1" SS	1
27	6440-SS	SPACER, SS	1
28	6441-1	WASHER, SPACER HDPE	1
29	10925-5	LABEL, STD ID	1

ITEM NUMBER

MODEL	1	2	3	4	5	* 6	* 6	* 6	* 7	8	* 9	10
	SPRING	DISK	DISK	BASE	SWIVEL	HOSE (STD)	HOSE (-OG)	HOSE (-RH)	HOSE GRD	CLAMP (2)	BALL STOP	ELBOW
SR17-L350	1961-7	1948	1947	8417-R	1935	5153-50	5101-50	5045-50	237-1	381	131-3	-
SL17-L350	1961-7R	1948	1947	8417-L	1935	5153-50	5101-50	5045-50	237-1	381	131-3	-
SR17-L430	1961-5	1948	1947	8417-R	439	5154-30	5131-30	5066-30	398-1	383	131-4	-
SL17-L430	1961-5R	1948	1947	8417-L	439	5154-30	5131-30	5066-30	398-1	383	131-4	-

ITEM NUMBER

MODEL	1	2	3	4	5	* 6	* 7	8	* 9	10
	SPRING	DISK	DISK	BASE	SWIVEL	HOSE (STD)	HOSE GRD	CLAMP (2)	BALL STOP	ELBOW
SR17-M325	2037-3	1948	1947	8417-R	1935	5224-25	237-1	381	131-3	500
SL17-M325	2037-3R	1948	1947	8417-L	1935	5224-25	237-1	381	131-3	500
SR17-M425	2037-3	1948	1947	8417-R	434	5256-25	398-1	383	131-4	1671
SL17-M425	2037-3R	1948	1947	8417-L	434	5256-25	398-1	383	131-4	1671

ITEM NUMBER

MODEL	1	2	3	4	5	* 6	* 7	8	* 9	10
	SPRING	DISK	DISK	BASE	SWIVEL	HOSE (STD)	HOSE GRD	CLAMP (2)	BALL STOP	ELBOW
SR17-H125	2037-3	1948	1947	8417-R	499	5304-25	237-1	115	131	616
SL17-H125	2037-3R	1948	1947	8417-L	499	5304-25	237-1	115	131	616
SR17-H325	2037-3	1948	1947	8417-R	521	5336-25	237-1	613	131-3	617
SL17-H325	2037-3R	1948	1947	8417-L	521	5336-25	237-1	613	131-3	617

\* ON "LESS HOSE" MODELS (SR17L-, SL17L-) EXCLUDE ITEMS #6,#7, AND #9.

NOTE: MODELS SUPPLIED WITH "STANDARD" HOSE UNLESS SUFFIXED WITH "-OG" OR "-RH". USE HOSE NUMBERS AS NOTED ABOVE.

REEL ASSEMBLY REPORTS R100 (LATCHOUT REMOVAL), R101 (LOCKING RING PLACEMENT), R112 (TIGHTENING AND TORQUING)