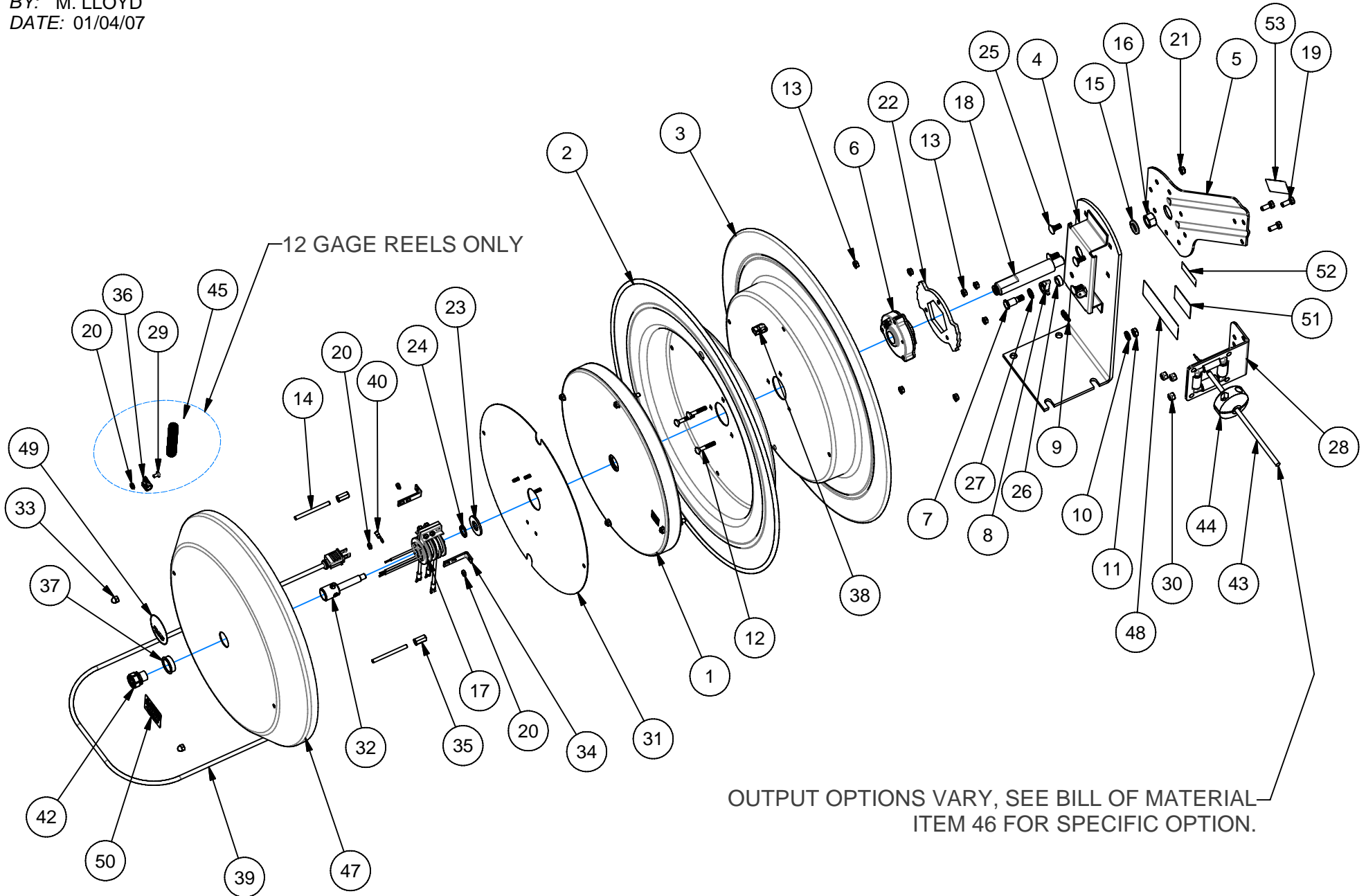


# EXP-94EZ

REVISION: B  
ECO NO.: 2371-9  
BY: M. LLOYD  
DATE: 01/04/07

# COXREELS SERIES EZ-PC24 - 20 AMP



ITEM	PART	DESCRIPTION	QTY
3	1704	DISK: 24" REEL	1
4	1744-2	BASE: 24" REEL	1
5	1733	ARM: GUIDE, 24"	1
7	1620	BOLT: 1/2" x 1-1/2" SHOULDER	1
8	640-1-SS	DOG: LOCKING	1
9	274-1-SS	SPRING: LOCK DOG	1
10	437	WASHER: 3/8" LOCK	1
11	184	NUT: 3/8-16 JAM	1
12	1953	BOLT: 1/4-20 x 1-1/2" CARRIAGE	3
13	125	NUT: 1/4-20 KEPS	7
14	8318	STUD: 1/4-20 x 3"	2
15	438	WASHER: 5/8" LOCK	1
16	3584	NUT: 5/8-11 HEX	1
18	1793	AXLE: 1"	1
19	312	BOLT: 5/16-18 X 3/4" HEX	3
20	130	NUT: #10-32 KEPS, QTY. = 5 IF 12-GAGE	3
21	111-1	NUT: 5/16-18 NYLOCK (LOW PROFILE)	4
22	1924	RING: LOCKING	1

ITEM	PART	DESCRIPTION	QTY
23	1755-1	WASHER: SPACER	1
24	1753	RING: RETAINING (5160-75)	1
25	10220-75	BOLT: 5/16-18 x 3/4" CARRIAGE	4
26	6440-SS	WASHER: SPACER	1
27	6441-1	WASHER: PLASTIC	1
28	1728-1	ASSEMBLY: ROLLER BRACKET	1
30	111	NUT: 5/16-18 NYLOCK HEX	3
31	7166-2	PLATE: ELECTRICAL MOUNTING	1
32	7161	PORT: INLET, 1"	1
33	8308	NUT: 1/4-20 ACORN	2
34	7160	SUPPORT: BRUSH CONTACT GUIDE	2
35	7879	NUT: 1/4-20 x 7/8" COUPLING	2
37	7167-1	BUSHING: OPEN, PLASTIC	1
47	8306	COVER: 24" PC REEL	1
48	10925-5B	LABEL: PRODUCT, STANDARD	1
49	10937	LABEL: EZ-COIL	1
50	10934	LABEL: CAUTION, PC REELS	1
51	10935	LABEL: CORD SPECS., PC REELS	1
52	10937-1	LABEL: PATENT, EZ-COIL	1
53	10950	LABEL: EZ-COIL, ARM	1

ITEM NUMBER

MODEL	ITEM NUMBER															ACCESSORY ITEM
	1	2	6	17	29	36	38	39	40	41	42	43	44	45	46	
	SPRING	DISC	EZ-COIL	SLIP RING	SCREW (2)	CLAMP (2)	BUSHING 90°	INPUT CABLE	TERMINAL RING	WIRE NUT (5)	STRAIN RELIEF	CABLE (FT)	STOP	GUARD		
EZ-PC24-0016-A	8330-2	1705-3	7474-6-R	7155	-	-	7169-2	7198	7175-1	7176-1	7168-1	-	131-1	-	7188-4	RECEPTICAL, SINGLE, MOLDED, 100'
EZ-PC24-0016-C	8330-2	1705-3	7474-6-R	7155	-	-	7169-2	7247	7175-1	7176-1	7168-1	-	131-1	-	7208-4	TUBE, LIGHT, FLUORESCENT, 100'
EZ-PC24-0016-D	8330-2	1705-3	7474-6-R	7155	-	-	7169-2	7198	7175-1	7176-1	7168-1	-	131-1	-	7207-4	ANGLE, LIGHT, FLUORESCENT, 100'
EZ-PC24-0016-E	8330-2	1705-3	7474-6-R	7155	-	-	7169-2	7198	7175-1	7176-1	7168-1	-	131-1	-	7206-4	CAGED, LIGHT, INCANDESCENT, 100'
EZ-PC24-0012-A	8330-1	1705-2	7474-8-R	7155	245	7199	-	7174-2	7175-2	7176-2	7168-2	7172-12	131	237-2	7215-2	RECEPTICAL, SINGLE, 20 AMP
EZ-PC24-0012-B	8330-1	1705-2	7474-8-R	7155	245	7199	-	7174-2	7175-2 (4)	7176-2	7168-2	7172-12	131	237-2	7203-2	RECEPTICAL, QUAD BOX, 20 AMP
EZ-PC24-0012-F	8330-1	1705-2	7474-8-R	7155	245	7199	-	7174-2	7175-2 (4)	7176-2	7168-2	7172-12	131	237-2	7205-2	RECEPTICAL, DUPLEX, GFCI, 20 AMP

ACCESSORIES

A - SINGLE IND. RECEPTICAL B - QUAD BOX IND. RECEPTICAL C - FLUORESCENT TUBE LIGHT D - FLUORESCENT ANGLE LIGHT E - CAGED INCANDESCENT LIGHT F - DUPLEX RECEPTICAL, GFCI X - NONE 4 - FOUR WIRE CABLE READY

REEL ASSEMBLY REPORTS: R100 (LATCHOUT REMOVAL), R101 (LOCKING RING PLACEMENT), R112 (TIGHTENING AND TORQUING)

OPERATING INST #028 (CORD INSTALLATION PROCEDURE)

REVISION: B

ECO: 2371-9

DATE: 1/4/2007

NAME: M. LLOYD