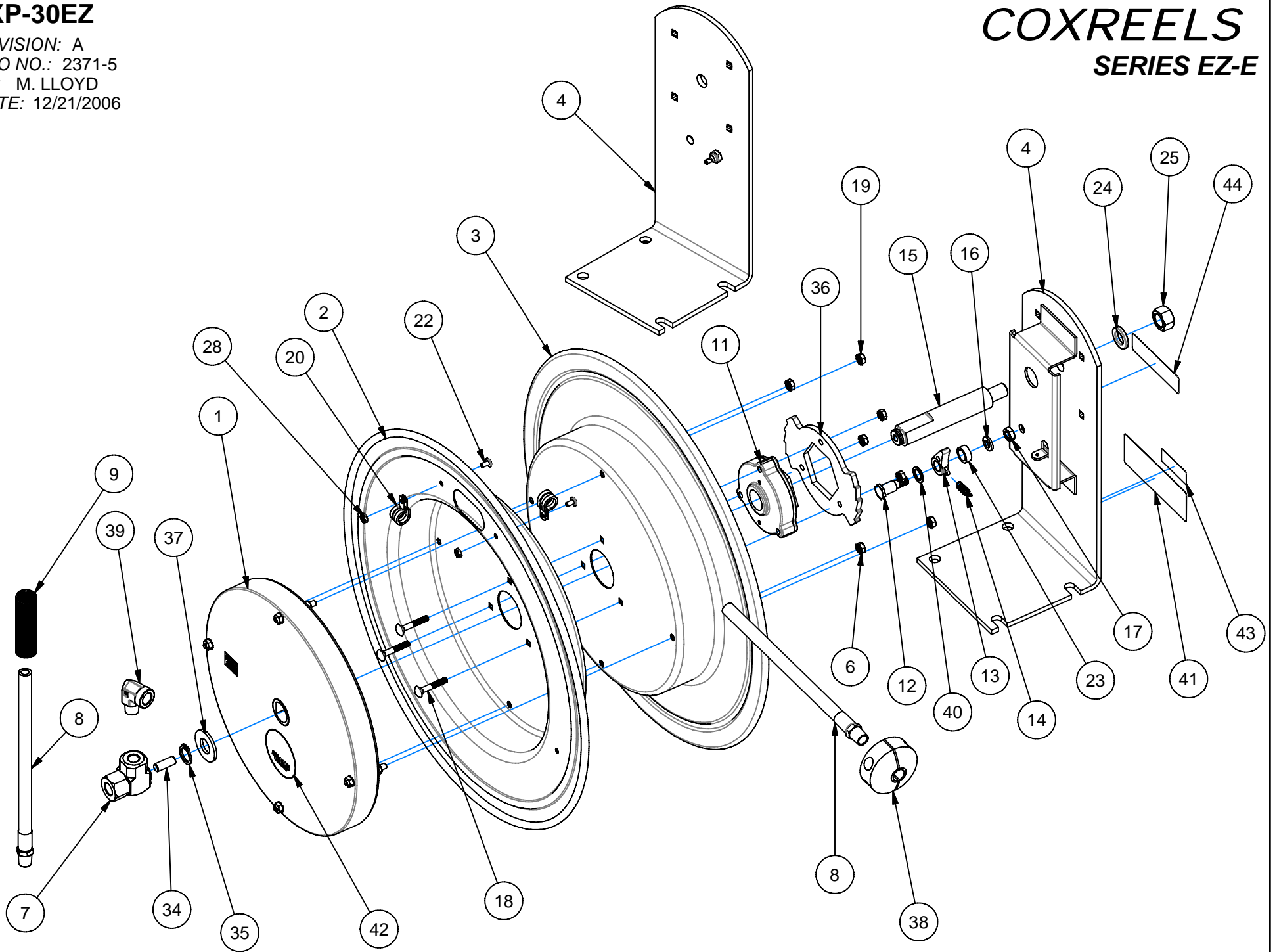


# EXP-30EZ

REVISION: A  
ECO NO.: 2371-5  
BY: M. LLOYD  
DATE: 12/21/2006

# COXREELS SERIES EZ-E



ITEM NO.	PART NO.	DESCRIPTION	QTY REQ'D
12	1620	BOLT, 1/2" x 11/16"	1
13	640-1-SS	CAM, LOCKING	1
14	274-1-SS	SPRING, DOG	1
16	437	WASHER, LOCK, 3/8"	1
17	184	NUT, JAM, 3/8-16	1
18	1953	CARRIAGE BOLT, 1/4-20 x 1.5	3
19	125	NUT, KEPS, 1/4-20	3
22	245	BOLT, 10-32 x 3/8"	2
23	6440-SS	WASHER, SPACER	1
24	438	WASHER, LOCK, 5/8"	1
25	3584	NUT, 5/8-11	1

ITEM NO.	PART NO.	DESCRIPTION	QTY REQ'D
28	130	NUT, KEPS, 10-32	2
34	10235-SS	STUD, 3/8-16 X 1",-SS	1
35	1753	RETAINING RING, (5160-75)	1
36	1924	LOCKING RING	1
37	1755-1	WASHER, SPACER	1
40	6441-1	WASHER, SPACER	1
41	10925-5B	LABEL: EZ-COIL ID STD.	1
42	10937	LABEL: EZ-COIL	1
43	10937-1	LABEL: EZ-COIL - PATENT LABEL	1
44	10950	LABEL: EZ-COIL ARM	1

ITEM NUMBER

MODEL NO.	ITEM NUMBER															
	1	2	3	4	6		7	* 8	* 8	* 8	* 9	11	15	20	* 38	39
	SPRING	DRUM	DRUM	BASE	NUT	QTY	SWIVEL	HOSE (STD)	HOSE (-OG)	HOSE (-RH)	GUARD H.	EZ-COIL	AXLE	CLAMP (2)	BALL ST.	ELBOW
EZ-E-LP-330	689-3	1948	1947	1970	130	2	1935	5153-30	5101-30	5045-30	237-1	7474-4-R	1956	381	131-3	-
EZ-E-LP-350	690-2	1703	1702	1743-2	125	4	1935	5153-50	5101-50	5045-50	237-1	7474-4-R	1793	381	131-3	-
EZ-E-LP-430	689-2	1948	1947	1970	130	2	439	5154-30	5131-30	5066-30	398-1	7474-4-R	1956	383	131-4	-
EZ-E-LP-450	691-3	1703	1702	1743-2	125	4	439	5154-50	5131-50	5066-50	398-1	7474-6-R	1793	383	131-4	-

ITEM NUMBER

MODEL NO.	ITEM NUMBER															
	1	2	3	4	6		7	* 8		* 9	11	15	20	* 38	39	
	SPRING	DRUM	DRUM	BASE	NUT	QTY	SWIVEL	HOSE (STD)		GUARD H.	EZ-COIL	AXLE	CLAMP (2)	BALL ST.	ELBOW	
EZ-E-MP-330	2037-2	1948	1947	1970	130	2	1935	5224-30		237-1	7474-6-R	1956	381	131-3	500	
EZ-E-MP-350	646	1703	1702	1743-2	125	4	1935	5224-50		237-1	7474-6-R	1793	381	131-3	-	
EZ-E-MP-430	2037-2	1948	1947	1970	130	2	439	5256-30		398-1	7474-6-R	1956	383	131-4	1671	
EZ-E-MP-450	696-1	1703	1702	1743-2	125	4	439	5256-50		398-1	7474-8-R	1794	383	131-4	-	

ITEM NUMBER

MODEL NO.	ITEM NUMBER															
	1	2	3	4	6		7	* 8		* 9	11	15	20	* 38	39	
	SPRING	DRUM	DRUM	BASE	NUT	QTY	SWIVEL	HOSE (STD)		GUARD H.	EZ-COIL	AXLE	CLAMP (2)	BALL ST.	ELBOW	
EZ-E-HP-130	2037-2	1948	1947	1970	130	2	499	5304-30		237-1	7474-6-R	1956	115	131	616	
EZ-E-HP-150	646	1703	1702	1743-2	125	4	499	5304-50		237-1	7474-6-R	1793	115	131	-	
EZ-E-HP-330	2037-2	1948	1947	1970	130	2	521	5336-30		237-1	7474-6-R	1956	613	131-3	617	
EZ-E-HP-350	696-1	1703	1702	1743-2	125	4	521	5336-50		237-1	7474-8-R	1794	613	131-3	-	

\* ON "LESS HOSE" MODELS (EZ-E-LPL-, EZ-E-MPL-, EZ-E-HPL-) EXCLUDE ITEMS #8, #9, AND #38.

NOTE: MODELS SUPPLIED WITH "STANDARD" HOSE UNLESS SUFFIXED WITH "-OG" OR "-RH". USE HOSE NUMBERS AS NOTED ABOVE.

REEL ASSEMBLY REPORTS: R100 (LATCHOUT REMOVAL), R101 (LOCKING RING PLACEMENT), R112 (TIGHTENING AND TORQUING)

REVISION: A

ECO: 2371-5

DATE: 12/21/2006

NAME: M. LLOYD