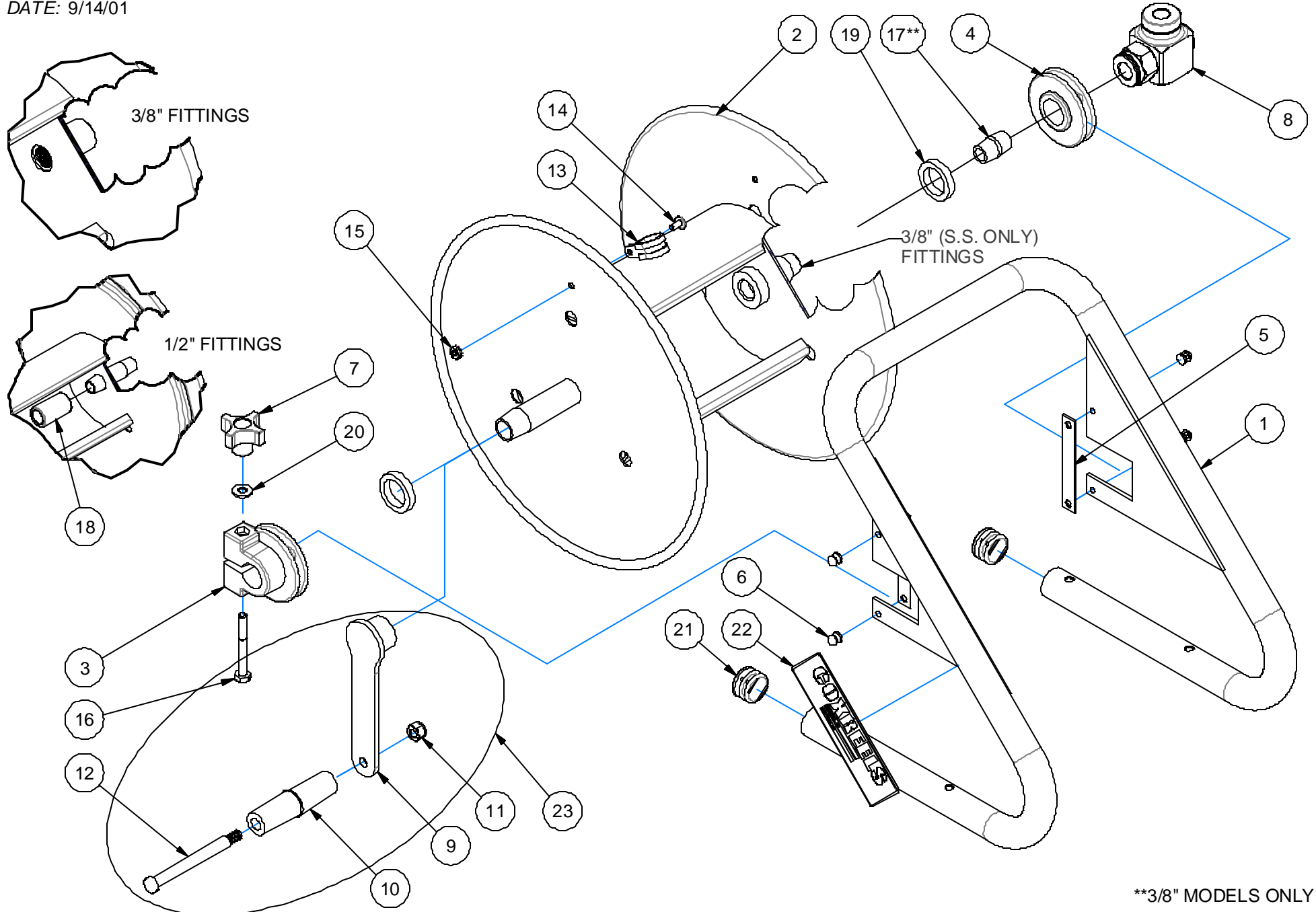


# EXP-40CM

REVISION: M  
ECO NO.: 1785-7  
BY: J. KNOSALLA  
DATE: 9/14/01

# COXREELS SERIES 112-CM & 117-CM



\*\*3/8" MODELS ONLY

## COMMON PARTS TO ALL CADDY CHALLENGER REELS

ASSY. ITEM NO.	DETAIL ITEM NO.	PART NO.	DESCRIPTION	112P-3-8-CM	112-3-100-CM	112-3-150-CM	117-4-225-CM
	1	7270-12-8	FRAME, "U", CHALLENGER	1	1		
		7270-12-12.5	FRAME, "U", CHALLENGER			1	
		7270-17-12.5	FRAME, "U", CHALLENGER				1
	2	7118-1-8	DRUM ASSY, 3/8" NPT, 5.5" X 8"W		1		
		7118-1-8-SPEC	DRUM ASSY, 3/8" NPT, 5.5" X 8"W (SS PLUMBING)	1			
		7118-1-12.5	DRUM ASSY, 3/8" NPT, 5.5" X 12.5"W			1	
		7108-2-12.5	DRUM ASSY, 1/2" NPT, 5.5" X 12.5"W				1
	3	6329-1-1	BEARING, EPDM, .877" ID, CRANK SIDE	1	1	1	1
	4	6328-1-1	BEARING, EPDM, .877" ID, PLUMBING SIDE	1	1	1	1
	5	15711-1	PLATE, KEEPER, BEARING	2	2	2	2
	6	7105	RIVET, POP, ALUMINUM	4	4	4	4
	7	15719	KNOB, BLACK, PHENOLIC	1	1	1	1
	8	1935	SWIVEL, 3/8" NPT, CARBOXYLATED		1	1	
433-FG-SS		SWIVEL, 3/8" NPT, NITRILE, FOOD GRADE, SS	1				
439		SWIVEL, 1/2" NPT, CARBOXYLATED				1	
23		7272-1	CRANK ASSEMBLY	1	1	1	1
	9	7107	CRANK	1	1	1	1
	10	6333	HANDLE, CRANK	1	1	1	1
	11	111-1	NUT, LOCK, 5/16-18 (LOW PROFILE)	1	1	1	1
	12	1621	SCREW, SHOULDER, 5/16-18	1	1	1	1
	13	381	HOSE CLAMP, #10	1	1	1	
		383	HOSE CLAMP, #12				1
	14	245	SCREW, TRUSS HD, 10-32 X 3/8"	1	1	1	1
	15	130	NUT, KEPS, 10-32	1	1	1	1
	16	7146	BOLT, HEX, 1/4-20 X 2-1/4", GR 5	1	1	1	1
	17	7115	NIPPLE, 3/8-18 X CLOSE, SCH 80	1	1	1	
	18	7116	AXLE, PLUMBING, 1/2-14 COUPLING				1*
	19	7145	SPACER	2	2	2	2
	20	688	WASHER, FLAT, 1/4" SAE	1	1	1	1
	21	7137	PLUG, TUBING (PLASTIC)	2	2	2	2
22	10925-5	NAMEPLATE, PRODUCT, STD DECAL	1	1	1	1	

\*SHOWN FOR REFERENCE ONLY. INCLUDED WITH DRUM ASSEMBLY.