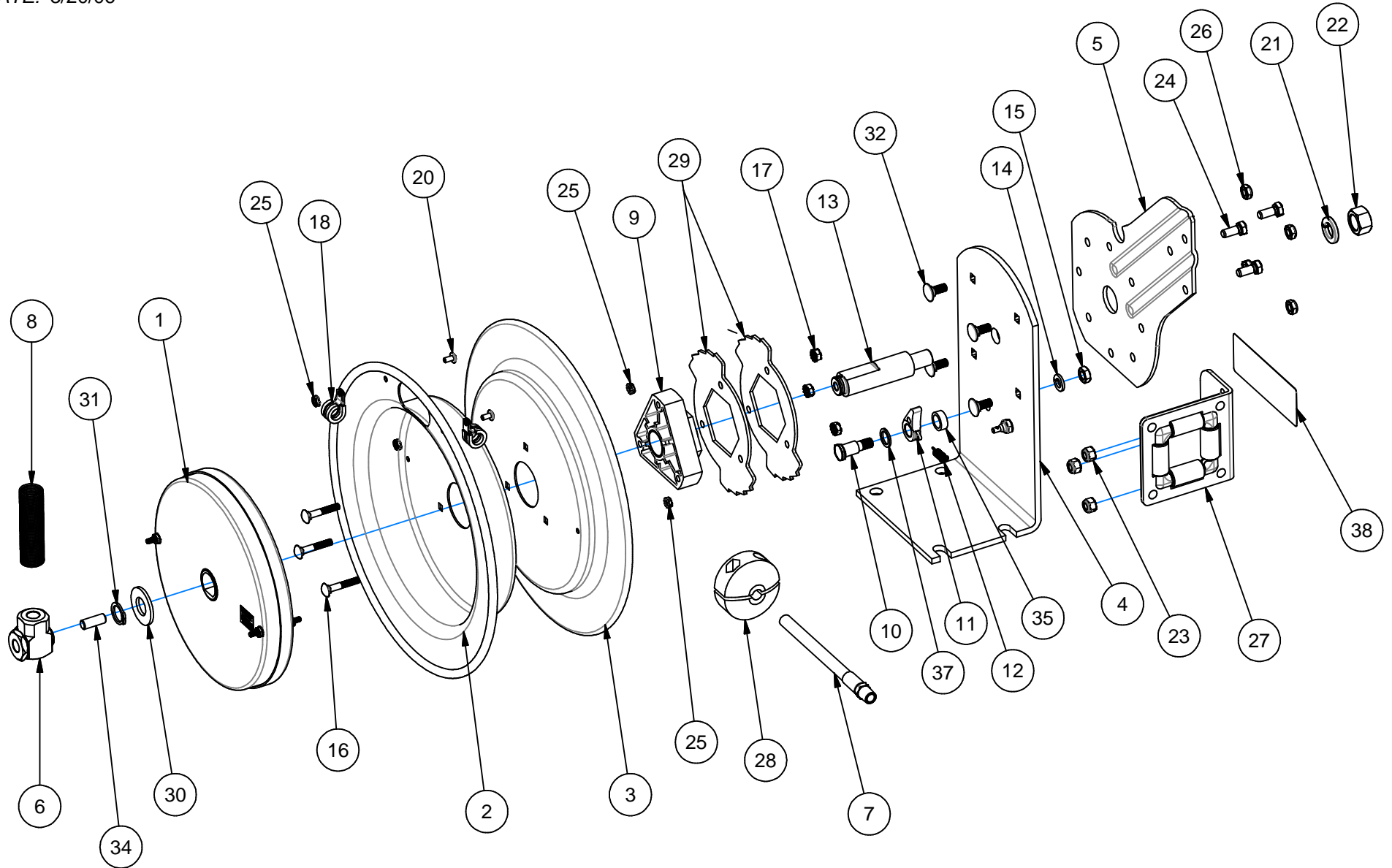


EXP-10AL

REVISION: B
ECO NO.: 2270
BY: G. REEDER
DATE: 3/20/06

COXREELS SERIES P - ALUMINUM



EXP-10AL

COMMON PARTS TO ALL SERIES P-ALUMINUM REELS

| ITEM NO. | PART NO. | DESCRIPTION | QTY REQ'D |
|----------|----------|-----------------------------|-----------|
| 9 | 1776-3 | ASSY., HUB BEARING | 1 |
| 10 | 1620 | BOLT, SHOULDER, 1/2"x1-1/2" | 1 |
| 11 | 640-1-SS | CAM, LOCKING | 1 |
| 12 | 274-1-SS | SPRING, DOG | 1 |
| 14 | 437 | WASHER, LOCK, 3/8" | 1 |
| 15 | 184 | NUT, JAM, 3/8-16 | 1 |
| 16 | 1953 | CARRIAGE BOLT, 1/4-20 x 1.5 | 3 |
| 17 | 125 | NUT, KEPS, 1/4-20 | 3 |
| 20 | 245 | SCREW, TRUSS HD. 10-32x3/8" | 2 |
| 21 | 438 | WASHER, LOCK, 5/8" | 1 |
| 22 | 3584 | NUT, 5/8-11 | 1 |
| 23 | 111 | NUT, LOCK, 5/16-18 | 3 |
| 24 | 312 | BOLT, 5/16-18 X 3/4" | 3 |

| ITEM NO. | PART NO. | DESCRIPTION | QTY REQ'D |
|----------|-----------|------------------------------|-----------|
| 25 | 130 | NUT, KEPS, 10-32 | 4 |
| 26 | 111-1 | NUT, LOCK, 5/16-18, LOW PROF | 4 |
| 29 | 1924-1-AL | LOCKING RING, ALUM. | 2 |
| 30 | 1755-1 | WASHER, SPACER | 1 |
| 31 | 1753 | RETAINING RING (5160-75) | 1 |
| 32 | 10220-75 | BOLT, CARRIAGE, 5/16-18x3/4" | 4 |
| 34 | 10235-SS | STUD: 3/8-16 X 1" SS | 1 |
| 35 | 6440-SS | WASHER, SPACER | 1 |
| 37 | 6441-1 | WASHER, SPACER | 1 |
| 38 | 10925-5 | LABEL | 1 |

ITEM NUMBER

| MODEL NO. | 1 | 2 | 3 | 4 | 5 | 6 | * 7 | * 7 | * 7 | * 8 | 13 | 18 (2) | 27 | * 28 |
|-------------|-----------|---------|---------|---------|-----------|--------|------------|------------|------------|----------|------|--------|-----------|-----------|
| | SPRING | DRUM | DRUM | BASE | ARM | SWIVEL | HOSE (STD) | HOSE (-OG) | HOSE (-RH) | HOSE GRD | AXLE | CLAMP | ROLLER B. | BALL STOP |
| P-LP-125-AL | 1959-3-AL | 139-AL | 140-AL | 1954-AL | 1732-1-AL | 1969 | 5150-25 | 5121-25 | 3870-25 | 237-1 | 1956 | 2169 | 1728-2-AL | 131 |
| P-LP-150-AL | 689-5-AL | 1948-AL | 1947-AL | 1970-AL | 1732-2-AL | 1969 | 5150-50 | 5121-50 | 3870-50 | 237-1 | 1956 | 2169 | 1728-3-AL | 131 |
| P-LP-325-AL | 1958-7-AL | 139-AL | 140-AL | 1954-AL | 1732-1-AL | 1935 | 5153-25 | 5101-25 | 5045-25 | 237-1 | 1956 | 381 | 1728-2-AL | 131-3 |
| P-LP-350-AL | 1961-7-AL | 1948-AL | 1947-AL | 1970-AL | 1732-2-AL | 1935 | 5153-50 | 5101-50 | 5045-50 | 237-1 | 1956 | 381 | 1728-3-AL | 131-3 |
| P-LP-425-AL | 689-2-AL | 1948-AL | 1947-AL | 1970-AL | 1732-2-AL | 439 | 5154-25 | 5131-25 | 5066-25 | 389-1 | 1956 | 383 | 1728-3-AL | 131-4 |
| P-LP-430-AL | 1961-5-AL | 1948-AL | 1947-AL | 1970-AL | 1732-2-AL | 439 | 5154-30 | 5131-30 | 5066-30 | 389-1 | 1956 | 383 | 1728-3-AL | 131-4 |

* ON "LESS HOSE" MODELS (P-LPL-) EXCLUDE ITEMS #7,#8, AND #28.

NOTE: MODELS SUPPLIED WITH "STANDARD" HOSE UNLESS SUFFIXED WITH "-OG" OR "-RH". USE HOSE NUMBERS AS NOTED ABOVE.

REEL ASSEMBLY REPORT R100 (LATCHOUT REMOVAL), R101 (LOCKING RING PLACEMENT), R112 (TIGHTENING AND TORQUING)

REVISION: B

ECO: 2270

DATE: 3/20/2006

NAME: G. REEDER